

PRESS RELEASE

4 September 2020

**Virtual awards ceremony recognises plants@work members
38 Leaf awards presented to members**

Yesterday plants@work presented members with 38 awards in a virtual ceremony including a Lifetime Achievement Award, three best category awards plus Gold and Silver Leaf Awards.

Members had entered the prestigious Leaf Awards by the end of January this year. The independent panel of judges had visited and assessed the sites but the pandemic lockdown meant the usual annual awards' ceremony could not take place.

Finally, yesterday a virtual ceremony rewarded members' creativity, design skills, care and dedication as well as their patience. Of course, a virtual ceremony doesn't lessen the importance of these awards and recognition of members' skills as those attending confirmed.



Our Chair Madeleine Evans of Tivoli Services and Deputy Chair Kenneth Freeman who coordinated and 'presented' the awards

Special achievements

Life time Achievement Award: Richard Stapleton, Greenscene Interior Display Ltd

Richard is celebrating 50 years of outstanding contribution to the interior landscaping and the horticultural industry.





Richard Stapleton

From school holidays tending to neighbours' gardens to working in garden centres when he left school, Richard was destined for a career in the industry. He worked in both Ireland and Hampshire in the UK at Hilliers and then Exbury Gardens where he specialized in the propagation of Ericaceous plants.

Returning to Ireland in 1974 and working for another garden centre, but it wasn't until 1980 that things changed considerably when he took over an interior landscape company in Dublin which was struggling in the recession. Greenscene Interior Display Ltd was born, and the rest as they say, is history. This year, the company under Richard's leadership celebrates 40 years in business.

Best Project 2020 Design & Installation

There were two awards in this category: **Greenscene Interior Design Ltd for Marlin Hotel, Dublin**

Judge Greg Redwood thought that the "Marlin Hotel, Dublin was one of the most impressive sites I saw this year, even though much of it is replica foliage. The replica Olive tree in the restaurant area is stunning, as are the replica green walls and plants throughout it. There is a skilful mix of real and replica plants, such that you don't notice that some are replica. The choice of containers was excellent, and they complement the other fixtures and fittings. A very stylish scheme."





From The Marlin Hotel installation

Awarded to Plant Designs Ltd for Societe Generale

Judge Greg Redwood commented "Societe Generale was a very impressive scheme, and the best I saw this year. Great variety in the range of plants chosen and all well-suited to their positions. The *Strelitzia nicolai* were growing superbly well and may even flower if allowed to continue to increase in height. There were also some superb quality replica plants in the darkest areas. The framing of the meeting/dining room balcony views was superb - the plants will thrive here. The reception area with the large asymmetrical white planting bed was one of the best individual features I saw this year. The ground level plantings on each floor was also highly unusual and very effective. Faultless (but exciting) plant and container selection."



From the Societe Generale installation



Best Project 2020, Maintenance
Awarded to Ambius for the Roslin Innovation Centre, Edinburgh

Judge Bill Peebles commented, "It offers the most stunning first impression when you first walk up to the building and as you walk around the building the living wall doesn't lose that initial impact.

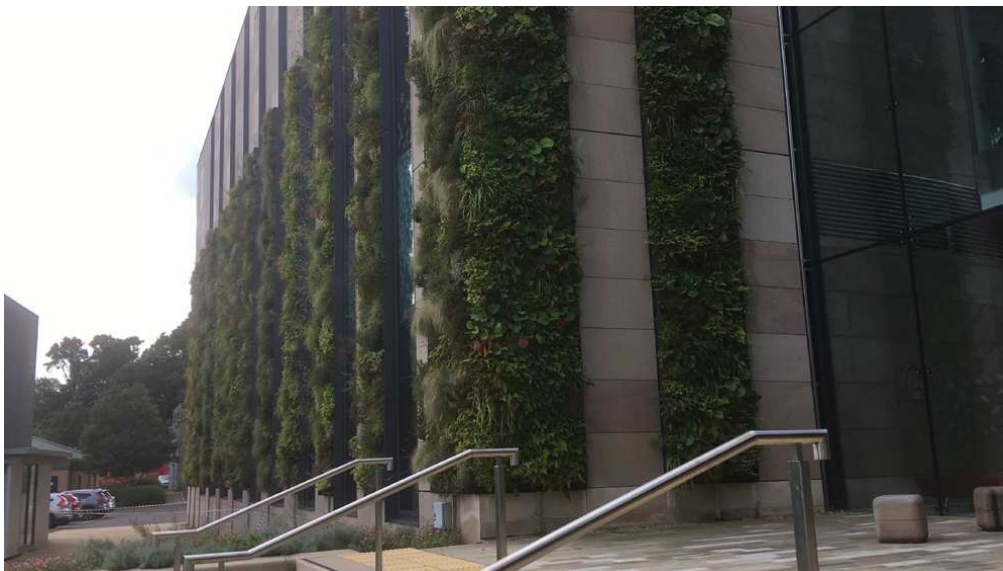
The interior of the reception area with its very impressive living wall is outstanding. A very worthy award.

"This building was out of this world, a pleasure to judge, outstanding just to stand there and take it all in.

"Probably not the best time of year to judge as some of the perennials were just beginning to show some new growth but the overall look of the Erica Carnea in full colour complements the grasses, the glossy foliage of Pachysandra, Bergénias, Hebe, and the colour yet to come from the perennials, geraniums, blues and pink, yellow from the Alchemilla mollis, shades of pink from the Bergénias.

"Truly an outstanding environmental project, one that brings this building to life even for the nesting birds.

Innovation Centre entry presentation. Not a dead leaf to be seen."



From the Roslin Innovation Centre entry

100 Gold Awards

One special mention to Indoor Garden Design who won a number of awards this year including a Gold Leaf Award for the Design & Installation at Amazonico. This marks their 100th Gold Leaf Award of 101 to date.



Congratulations to all who entered

plants@work Chair, Madeleine Evans of Tivoli Landscaping confirmed, "The calibre of this year's awards didn't disappoint even though we had to wait an additional five months to find out the results.

"As usual our independent panel of judges visited all sites to justify the awards given using a similar formula to the judging at the RHS Chelsea Flower Show where there can be more than one gold, one silver and one bronze in each category.

"Awarding Best Projects in Design & Installation and Maintenance ensures there is also some clarification and division in members' attainments. Congratulations to all of the members who entered. We hope to see even more entries next year as we celebrate our 20th birthday."

A list of the other worthy winners is available on our website.

The virtual event was kindly sponsored by Koberg Bv and Greenscene Interior Plant Displays Ltd.

ends

.....

For more information please contact Coll Smith, Marketing Manager at plants@work via

email: marketing@plantsatwork.org.uk
mob: 07758 215661

website: www.plantsatwork.org.uk

About the judges

Greg Redwood has a wealth of experience in horticulture and is currently Head of Great Glasshouses and Horticultural Training Section at Kew Royal Botanic Gardens. He is responsible for the Kew Diploma, Kew Apprenticeship & Traineeship, horticultural interns and all horticultural training, as well as the running of the glasshouses. Greg is also an RHS judge, and chairs the tender stand judging panels at the RHS shows.

Nicola Bristow has 30 plus years of horticultural experience working in the UK, Australia and New Zealand in garden centres and in both interior and exterior maintenance of planting. She now works as a Horticultural Advisor. Nicola comments that working in customer service roles for the majority of her career, makes her highly aware of customer expectations.

Rob Sterling trained in garden design in 1998 and ran his own practice for a while. He joined the RHS in 2003 and was responsible for the weekly purchasing of houseplants for the plant centre as well as for the visual merchandising of the houseplant and conservatory sections. Since 2012 he has been a horticultural advisor with the RHS and helps answer approximately



70,000 members gardening enquiries each year with a small team of other advisors. He also regularly writes for gardening magazines, the national press and podcasts. His specialism is in tropical plants, particularly orchids and the genus Hoya.

Bill Peebles

Bill visited installations in the north; he is an ex-chair of BALI and now Deacon of the Incorporation of Gardeners of Glasgow. After a long and varied horticultural career, now 'retired' Bill still continues as a judge for the National Landscape Awards and has been a director of the Scotland Garden Show.

.

