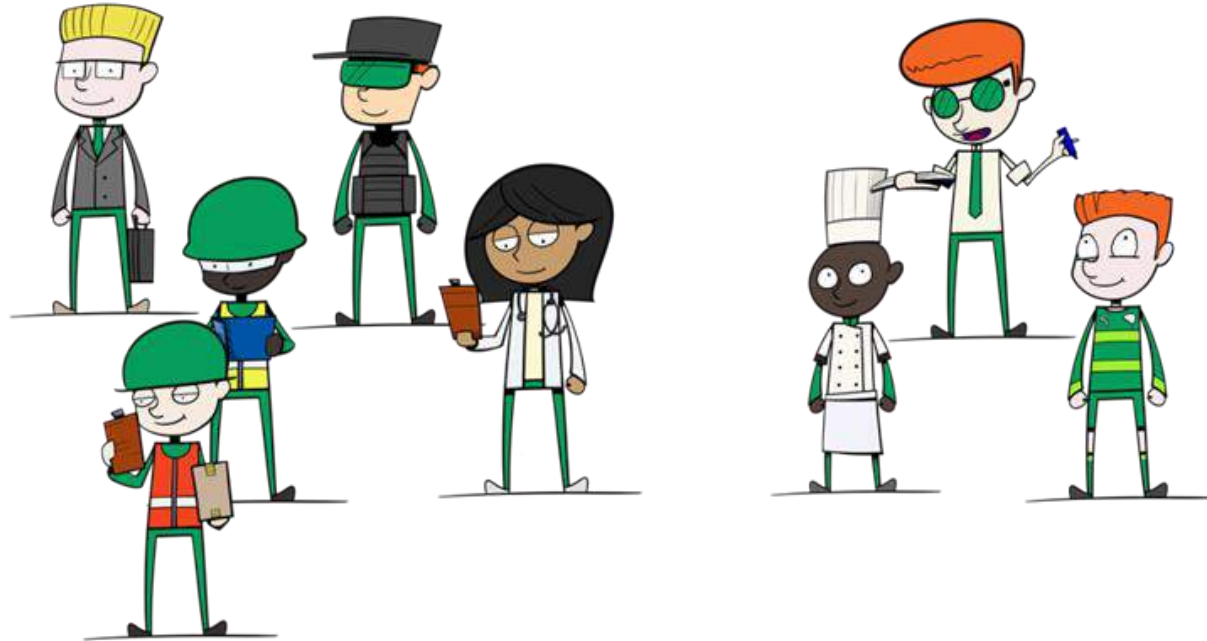


# National Careers Week





## What does Tom do?

- ▶ I start my work early in the morning
- ▶ I need to follow instructions
- ▶ I work in the office sometimes and sometimes in the public space
- ▶ I look after houseplants
- ▶ I am an interior landscape technician



## What do Michelle and Nadia do?

- ▶ We also start work early in the morning
- ▶ We need to follow instructions
- ▶ We use bags of soil
- ▶ We use pots and containers
- ▶ We need to know how to plant houseplants properly
- ▶ We are interior landscape technicians from the installation team





## What does Charlotte do?

- ▶ I like Christmas time
- ▶ I work in different offices
- ▶ I work in shopping centres
- ▶ I work in hotels
- ▶ I look after Christmas trees and decorations
- ▶ I am a Christmas Elf, I install Christmas displays



## What does Ian do?

- ▶ My job is different every day
- ▶ I need to talk to many people
- ▶ I prepare sketches and mood boards
- ▶ I need to know a lot about the plants
- ▶ I make interior spaces better to live and work in
- ▶ I am an interior landscaping designer

What is interior landscaping?

What do you feel when you  
look at the colour green?

The background features abstract, overlapping geometric shapes in various shades of green, ranging from light lime to dark forest green. The shapes are primarily triangles and polygons, creating a dynamic, layered effect. The overall composition is clean and modern, with the text centered on a white background.

Does the green colour  
make you feel:

good, relaxed, calm  
or

angry, restless, stressed



The background features abstract, overlapping geometric shapes in various shades of green, ranging from light lime to dark forest green. The shapes are primarily triangles and polygons, creating a dynamic, layered effect. The text is centered in a clean, sans-serif font.

Which classroom  
would you like to study in?

This one?





Or this one?





This one?





Or this one?





Which office do you like better?

This one?





Or this one?





This one?








Or this one?



The background features abstract, overlapping geometric shapes in various shades of green, ranging from light lime to dark forest green. The shapes are primarily triangles and polygons, creating a dynamic, layered effect. The text is centered in a clean, sans-serif font.

Interior Landscapers  
bring plants into interior  
spaces to make everyone  
feel better and happier

A photograph of two people working in a greenhouse or nursery. In the foreground, a man with a beard and a dark shirt is leaning over a large snake plant, examining its leaves. In the background, another man with dark hair is also working with plants. The scene is brightly lit, and the background is slightly blurred. A green geometric shape is overlaid on the right side of the image.

**Remember, all the jobs you have just seen  
needed lots of personal skills  
It's not all about exams and certificates  
Ask your parents about what skills they need  
for their job**